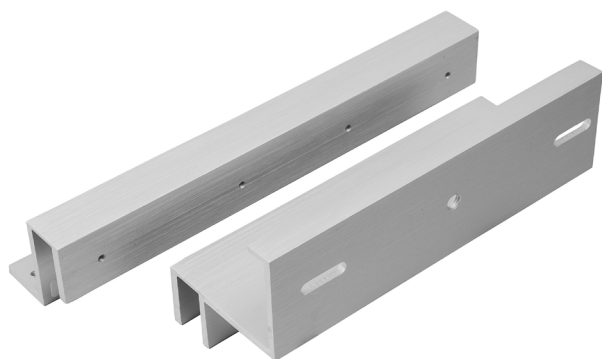




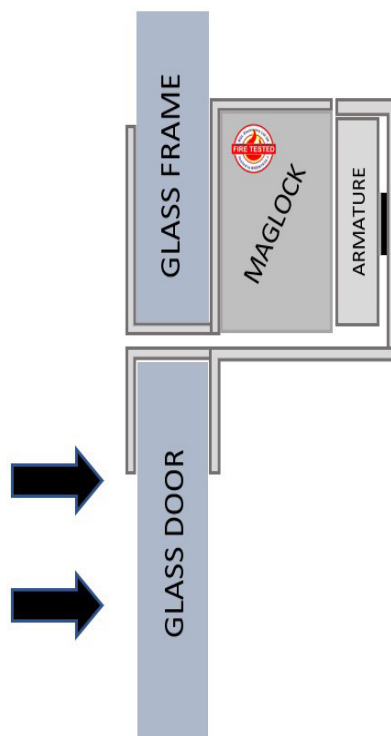
ZL BRACKETS FOR GLASS DOORS (600LB)

MAGNETIC LOCK

Range of brackets suitable providing solutions for a variety of glass door requirements. From a market leader in access control.



GD600ZL



SPECIFICATION	FEATURES	OTHER PRODUCTS
---------------	----------	----------------

GD600ZL
 • 2 x GD600ZL brackets required for double maglocks

Suitable for RGL Slimline Maglocks - inc:
 ML600 / ML600-M / ML600-MDS / ML600-D / ML600-D-M / ML600-D-MDS

Z & L Brackets for an inward opening glass door, which also has a glass header. Comes complete with spacers and grub screws to ensure a secure fitting.

GD600ZL
 • ZL bracket for use on inward opening glass doors
 • Anodised aluminium finish
 • Suitable for 10-14mm thick glass
 • Gap between door and header must be at least 6mm

Alternative Brackets/Housings:

• BK600-F-L/AB (Architectural F/ZL)	INWARD
• AB600ZL-DC (Architectural ZL)	
• GD600ZL (Glass Door ZL)	
• AB600CL (Architectural L)	OUTWARD
• ADJ600-L (Highly adjustable L)	
• AH600 (Required for Fire Doors)	
• BK600U (Glass door bracket)	



DIMENSIONS	CONTENTS
------------	----------

GD600ZL
 • 250 (mm) L Bracket (L)
 • 190 (mm) Z Bracket (L)
 836g Boxed

GD600ZL
 • 1 x ZL Brackets
 • 1 x Fixing kits

